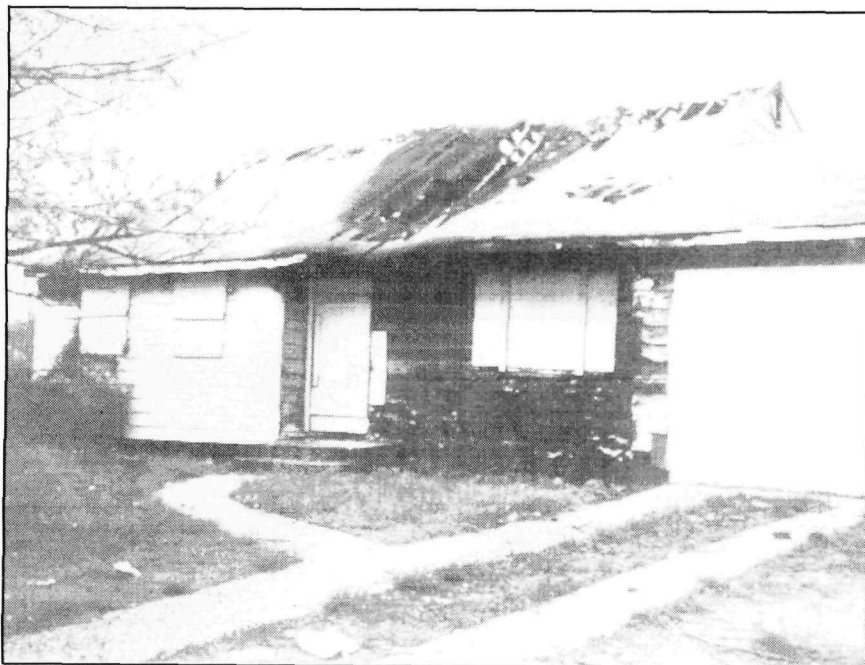


WHEN WORKING MEN AND WOMEN CANNOT AFFORD TO LIVE SOMETHING'S GOT TO GIVE. Join EFWA's Winter Survival Campaign to END THE WINTER DEATH TOLL!



FACT: In the first 30 days of this winter, four houses caught fire due to unsafe heating in one Suffolk fire district alone.

FACT: In 2011 on Long Island, National Grid disconnected 9,733 residents and LIPA disconnected 18,164 residents.

FACT: Heating oil prices are up \$1/gallon from 2011 to 2012.

FACT: Feds cut NY Home Energy Assistance Program by 50%, from \$534 million in 2010 to \$250 in 2011.

FACT: EFWA's Winter Survival Campaign saves at least six lives each year, just by being there.

FACT: EFWA's Winter Survival Campaign needs your help as the challenges to providing survival and solutions for low-income workers this winter are greater than ever!

DON'T SYMPATHIZE ORGANIZE

Long Island is the wealthiest region in New York State outside of New York City. The labor of Suffolk County farm workers alone generated a collective \$270 million in revenue in agricultural products in 2010 making it the wealthiest agricultural county in New York. The high costs of utilities and other expenses have left over 150,000 Long Island residents eating out of food pantries and soup kitchens. Over 20,000 mortgages in Suffolk County are more than three months unpaid and vulnerable to bank foreclosures. Foreclosure of these houses means that thousands of residents will be added to the over 50,000 homeless residents on Long Island.

WHAT CAN BE DONE ?

Since 1972, EFWA members have organized an all-volunteer, independent, unincorporated membership association built on a self-help basis, with members helping members to reverse the grinding poverty faced by migrant and seasonal farm workers, and other low-paid workers in the county. Students, professors, clergy, business people, professionals, housewives and others have joined together with EFWA members to fight for long-term change and a better way of life for farm workers and their families.

Act Now? Join EFWA's Winter Survival Campaign as a Volunteer!

Eastern Farm Workers Association

58 Beaver Dam Road, Bellport, New York, 11713 631-286-8004

“You Can Make A Difference!”

Since 1972 EASTERN FARM WORKERS ASSOCIATION's (EFWA) membership of farm and other low-paid workers in Suffolk County have built an independent organization of their own to represent their needs and interests. EFWA never has and never will accept government funding and is entirely volunteer-run. EFWA members help with other members meet daily survival needs so that they can be freed up to lead the fight to end the government policies that are the cause of our poverty conditions.

Volunteers are urgently needed to join us on membership canvasses in low-income neighborhoods twice weekly, to come on camp crews to farm labor camps, to drive, to run distributions of donated supplies to EFWA members around the county, to serve as medical and legal advocates, collecting heaters and recruiting professionals for heater safety inspections, collect blankets, warm clothing and non-perishable food items, and join in a Winter Watch to ensure that elderly, disabled and home bound members are not isolated during the winter months.



BECOME PART OF THE SOLUTION!

Join us this winter and build our Winter Survival Campaign!

You as a volunteer can help save lives and build long-term solutions for our low-income members.

Mail or Drop off at EFWA!:

YES! I WILL JOIN EFWA and build the WINTER SURVIVAL CAMPAIGN
I WILL:

- Volunteer full-time _____ part-time _____ starting: _____.
- Join EFWA's house-to-house membership canvass in low-income neighborhoods.
- Organize a food drive, blankets &/or clothing drive in my neighborhood/school/place of work/ place of worship/organization.
- Volunteer as a legal or medical advocate.
- Donate a running car or van.
- Host an EFWA speaker at my school/place of worship/organization.
- Donate food, blankets, heaters, or other urgently needed resources.

Name _____ Phone: _____

Address _____

City _____ State _____ Zip: _____

Labor donated